



REQUEST FOR QUALIFICATIONS

Corvallis Parks & Recreation Community Center Remodel (formerly Chintimini Senior Center)

Artists are invited to create a dimensional wall installation in the Lounge adjacent to the Main Entrance and Lobby, in an extension/refurbishing of the Corvallis Community Center formerly known as a Senior Center.

About Corvallis, the Community Center and Goals:

The City of Corvallis is a growing and prosperous community located in Oregon's beautiful Willamette Valley, population 59,000. In addition to year round residents, the City is also home to Oregon State University.

The Parks and Recreation Department owns and operates the Community Center where the public art will be displayed. The Community Center is a robust and well used facility with over 500 programs offered annually with 29,000 program registrations. The neighborhood is comprised largely of students in coops or apartments, with a range of single family housing. Across the street from the Center is the main Benton County Health Department facility.

The Community Center and the surrounding Chintimini Park underwent a renovation and expansion: 2,300 square feet of classroom space was added. The renovation will better connect indoor space with the park and create new outdoor patios. The park has added new amenities serving people of all ages to become an intergenerational hub.

The P&R Department's vision is to play a pivotal role in maintaining a high standard of livability in our community. They enhance the quality of life for residents with a green network of attractive, well managed park trails and natural areas and create a premier destination for visitors.

The P&R Department invites residents of Corvallis to make healthy, sustainable choices by offering a variety of recreational and wellness activities, facilities, volunteer opportunities, and educational programs. Programs and services offered by the P&R Department are excellent in terms of value and quality.

This new Public Art Project, representing 1% of the renovation project budget, amplifies the new updated entrance and lobby and adds an important, colorful focal point, to draw the facility users throughout the building.

Artwork Location: The Lounge:

A New Main Entrance and Lobby welcomes visitors into a multi-use building, and is connected with **The Lounge** where people are encouraged to congregate, have tea or coffee, sit and “hang out.” The middle of the Lounge is bi-sected by three load-bearing square Douglas Fir posts replacing an original wall. The wall across from the one bearing the artwork will have space dedicated for an information screen. As the name indicates, there will be multiple tables and seating areas. A hallway from the Lounge leads to classrooms and to the rest of the building.

The Lobby contains an information desk/counter and a coffee station. It is separated from the Lounge with a wall where the coffee bar is located, and an open area with a load-bearing post in the middle.

Budget:

A total of \$25,000 is available for the commission. This must include artist fees, fabrication, insurance, shipping, travel, installation, documentation and all other project costs.

Scope of the Design:

The design is for an un-interrupted wall installation in the Lounge of 10 feet high and 44'2" feet long. It is a smooth drywall. The Lounge itself consists of a brighter area at one side connected with the Lobby, and the other side with a door to the outside, hence the location of the artwork is in a high traffic area. The rest of the Lounge is separated visually by three Douglas Fir posts leading to other parts of the facility. This side will be occupied with seating.

The dimensional wall installation will be the only permanent artwork in the space and should demand attention. The length of the wall would accommodate a design depicting movement, flow, change. To enhance the presence of the artwork, artists are encouraged to include 3 dimensionality or relief. The dimensionality can be achieved by sculpted elements or shaped or ridged panels of material separated from the wall with a couple of inches. The construction of the wall will accommodate attachments to it.

Character:

The design should be innovative, playful or bold, and enhance the welcoming character of the Community Center. Creating elements of low-relief will be encouraged as to enhance the presence of artwork. Low-relief, raised shapes or the placement of floating elements will potentially create a shadow play, creating movement and surprise. While a flat mural may become a background over time for frequent visitors, a wall installation can command enduring interest.



The design can be colorful, but must keep the existing color scheme and design elements in mind. The color scheme in the Lounge is neutral with grey-blue, beiges and natural wood of the Douglas Fir columns as the main colors. The adjacent Lobby has a royal blue wall (depicted in the Parks & Recreation lower left leaf logo) which is next to the wall of the mural. A light blue striped glass is at the reception counter. Both will be visible from the new artwork.

The existing color scheme and signage in the building are based on the shape and colors of the Park & Recreation Department logo: blue, green, yellow and brown in an oval leaf shapes. The leaf motif of the logo is represented on doors with large cut outs in the logo's shapes and colors.

An image of samples of the floor covering and the other colors in the area is attached and will be available to view in person at a time to be scheduled.

Materials and maintenance:

Materials can be paint, ceramic tile, glass, wood, metal and other low maintenance colorfast materials. There can be a mixture of texture, surface character etc. The space is a high traffic area, with the use of carts, mobility devices, and occasional large equipment.

It is advised to have the relief design limited to no more than 4" below 8 feet, and no more than 7-8" above 8 feet, or be impervious to impact from these devices.

Proposal:

To be considered, submitted RFQs must include

- Contact information
- One-page resume
- Ten (10) images of past comparable work with corresponding list detailing scale of each piece
- Letter of interest with outline of proposal
- Project Budget
- Timeline for completion

Selection process:

- Email proposals in digital format to Curator, Hester Coucke, project and team coordinator at hester@theartscenter.net. (Questions about submissions may also be sent to Hester at this email.)
- A community volunteer selection committee will review and select three (3) proposals to be developed in detail. The three selected artists will receive \$800 each as a design fee.
- Artists are encouraged to [read more about the Center](#) and its many offerings, as well as visit the facility before submitting design.
- The selection committee consists of members of the Public Art Selection Advisory Committee, Arts & Culture Advisory Board, Parks and Recreation staff and community members who utilize the facility.

Selection criteria:

Applicants must demonstrate the ability to create a permanent, public artwork and enthusiasm for creating work for the interior space of the Community Center. The successful applicant will specifically and succinctly address the application. The City of Corvallis and The Arts Center encourage artists from all cultural traditions, generations and artists new to public art to apply.

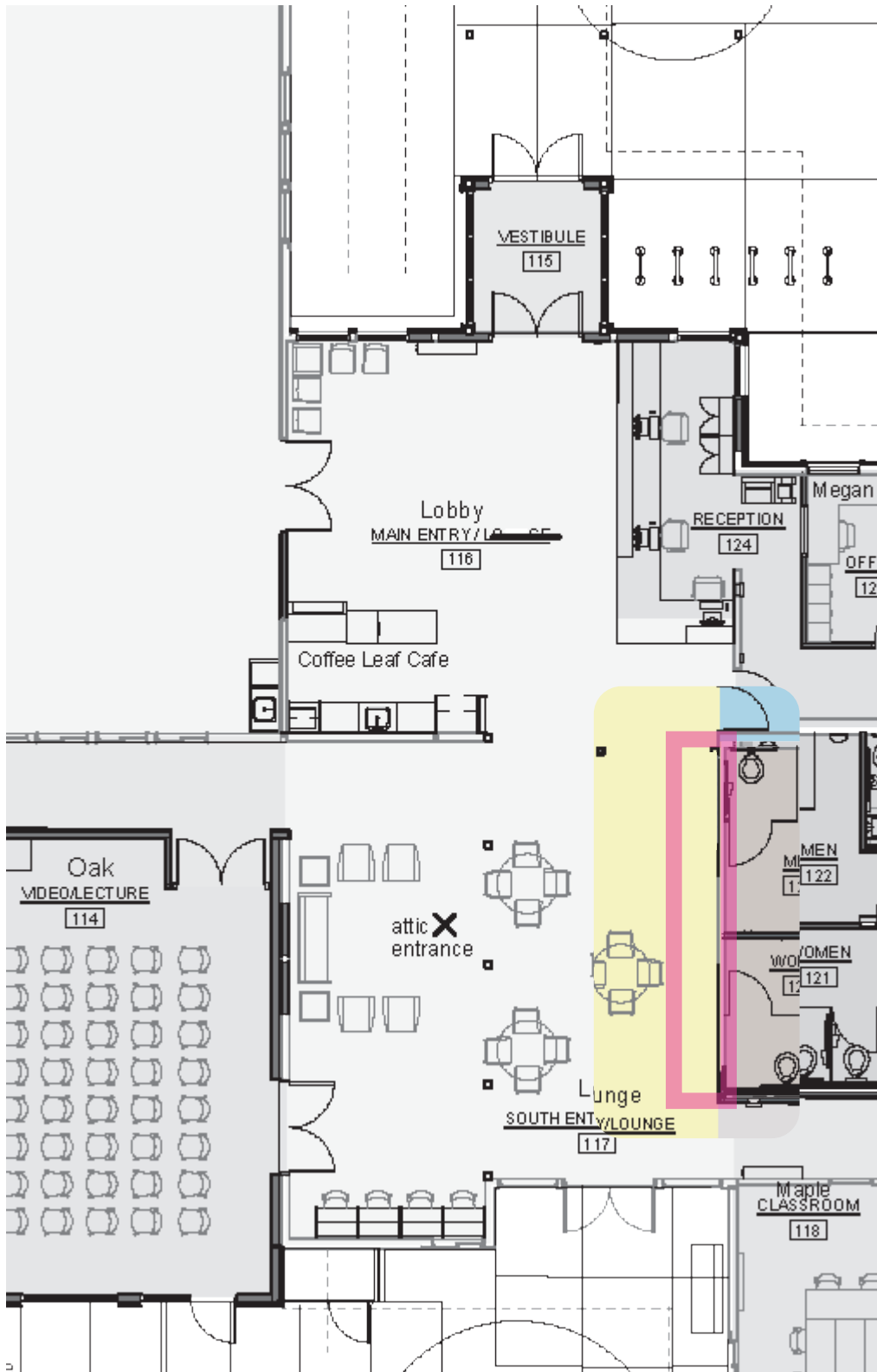


Plans and dimensions:

The wall measure 10' high and 44' 2" long
The Lobby and the Lounge are both carpeted.

Eligibility:

Artists from the Pacific Northwest are eligible. Artists from the Willamette Valley will be given preference.



Tentative schedule:

- **August 1, 2020**
Deadline for submission (will remain open if submissions do not meet the project criteria)
- **August 8, 2020**
Notification to three (3) selected artists with invitation to create final design
- **September 30, 2020**
Deadline final design
- **October 9, 2020**
Committee selection meetings for artists to present their proposals
- **October 12, 2020**
Notification final design
- **January 2021**
Installation
- **TBA**
Grand Opening of the Center

This public art program is made possible with the City of Corvallis One Percent for Art program.

